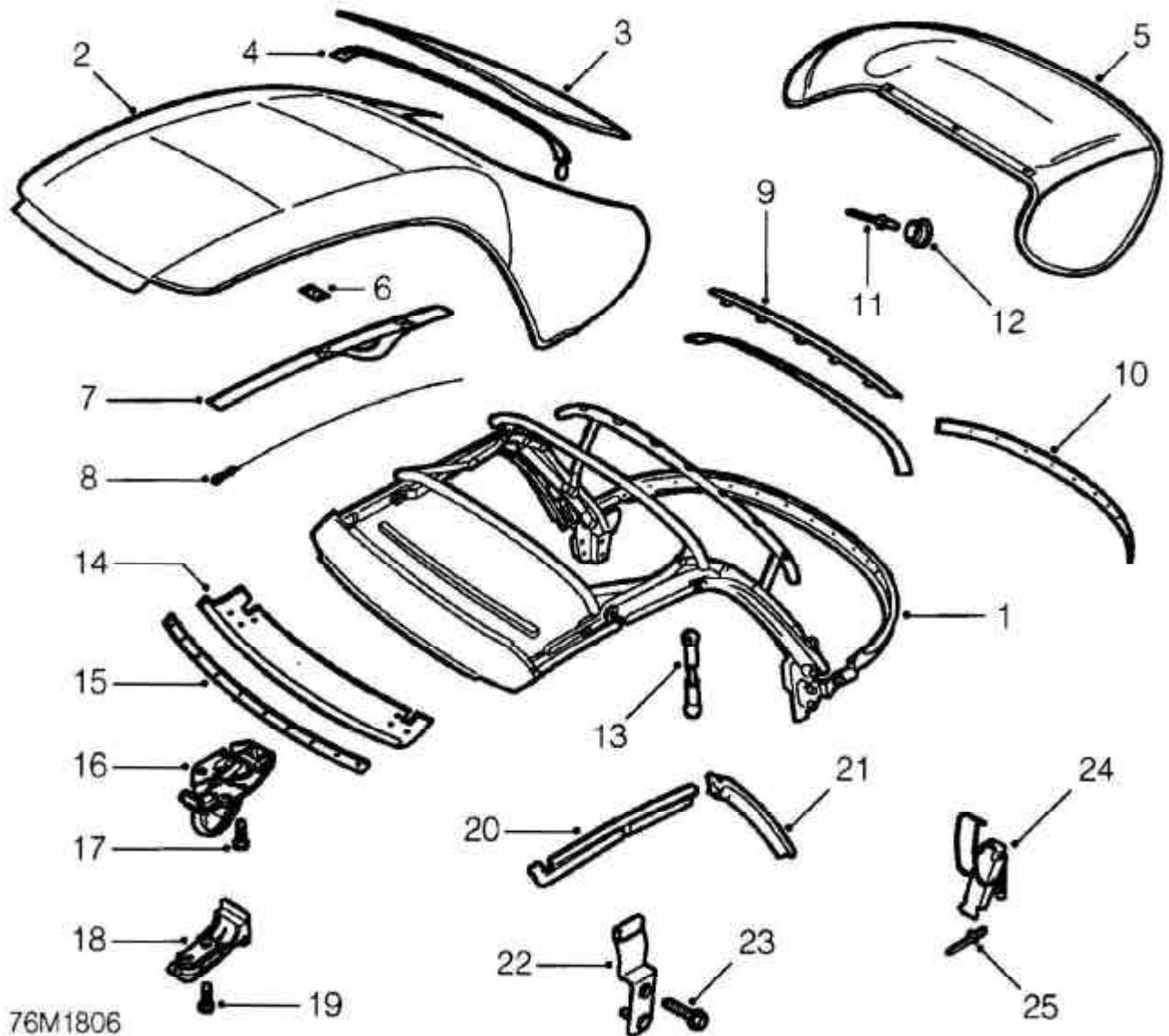




HOOD ASSEMBLY COMPONENTS - SOFT TOP



76M1806

- | | |
|--|--|
| <ul style="list-style-type: none"> 1. Hood frame 2. Hood 3. Backlight 4. Backlight zip 5. Hood cover, tonneau 6. Retaining plate, 6 off 7. Tape elastic, 2 off 8. Tension cable, 2 off 9. Rear bow extrusion 10. Rear bow, canopy insert 11. Pop rivet - tonneau panel, 2 off 12. Stud - tonneau panel, 2 off 13. Link rod, 2 off | <ul style="list-style-type: none"> 14. Front header fabric cover 15. Front header insert 16. Catch - front header, 2 off 17. Torx screw - catch, 6 off 18. Striker - front header, 2 off 19. Torx screw - striker, 4 off 20. Seal - cantrail, 2 off 21. Seal - B post, 2 off 22. Mounting plate - B post, 2 off 23. Screw - plate to body, 4 off 24. Catch - rear hoodwell, 5 off 25. Rivet - hoodwell catch, 10 off |
|--|--|